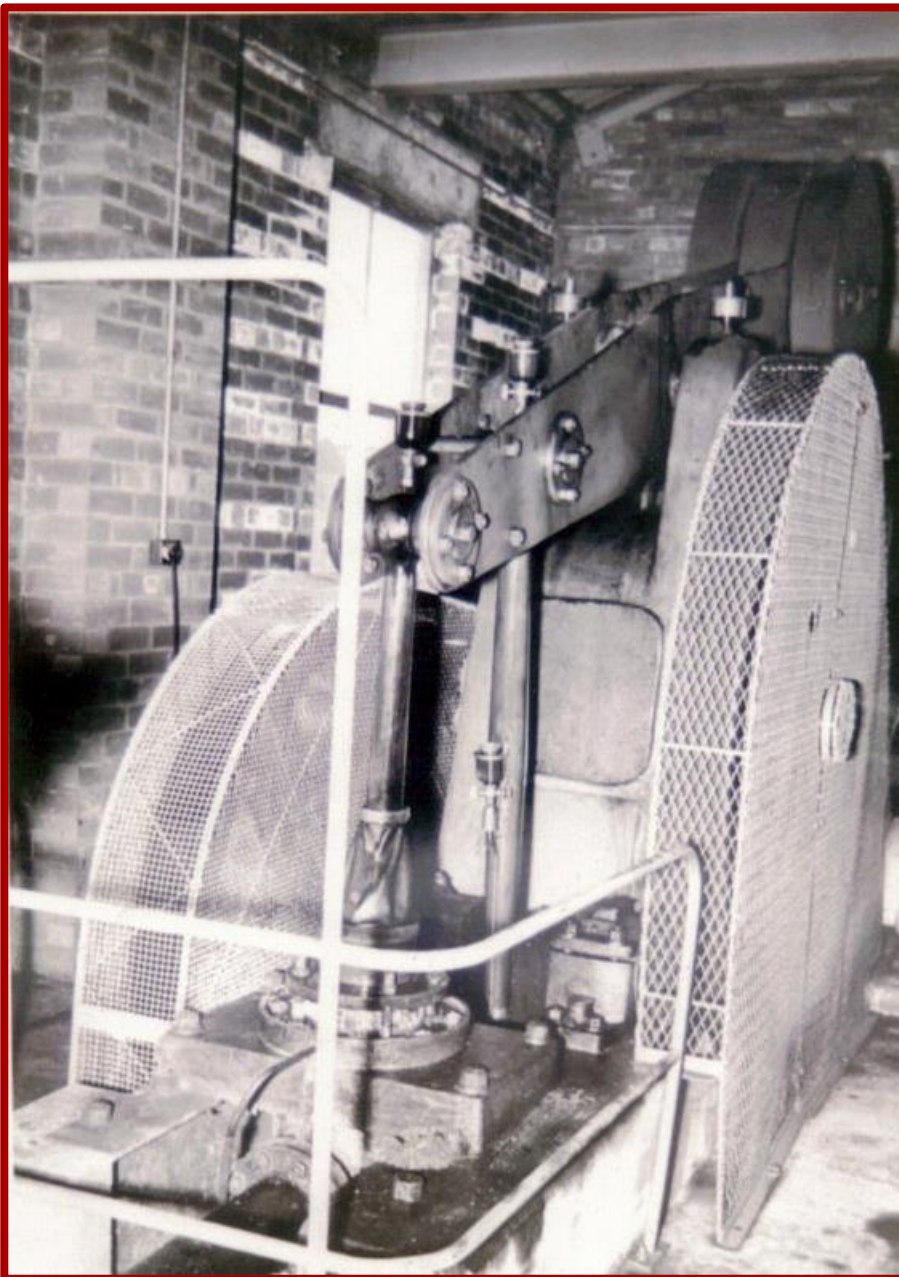


Inside Pump House No 5

The new Pumphouse was numbered 5 (after the borehole) but the pump, manufactured by **Thomas Matthews Ltd of Manchester**, was given the number 2. It operated from 1950 until 1977, raising brine at 9000 gall/hr from Borehole No 5 to the header tank. All the machinery was removed from pumphouse No5, but the building is **locally listed**.

The borehole is fully lined throughout, first at 600mm dia to a depth of 24.4m then 530mm dia to a depth of 59m, at which point it encountered the brine. It then continued at 450mm dia to 100m, the first 5m of this section being perforated to allow brine to enter. The pump intake pipe was set at a depth of 60m to draw the best quality brine.



Above: View of the pump in action in the 1950's.

Right: After decommissioning, the pump was displayed outside the Elworth works, then Hays Chemicals, in September 1989.

Despite all attempts to save it for display, the pump was destroyed when Elworth Works was demolished in 2010.

