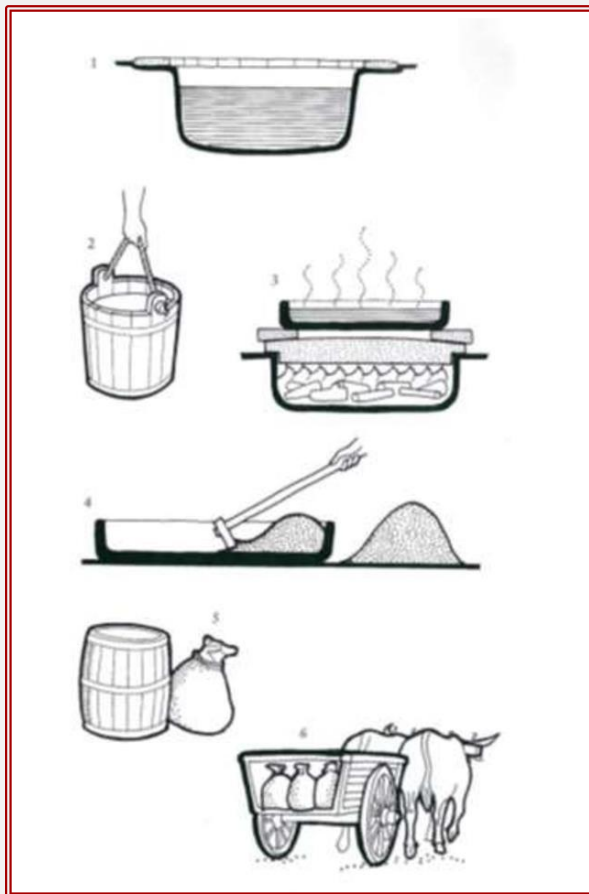
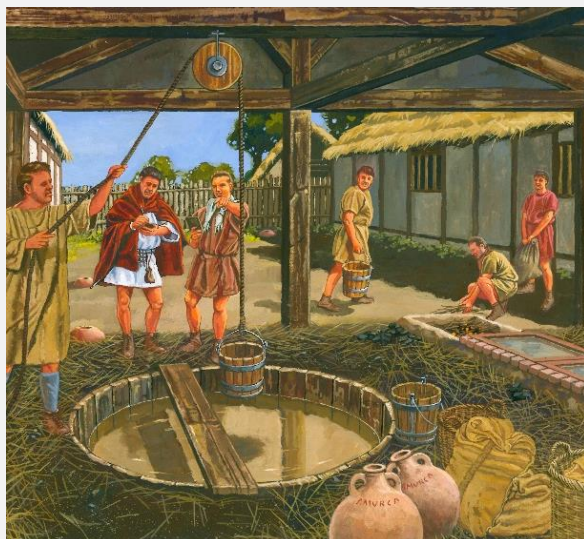


# Roman



## The Roman Salt making Process

1. Brine taken from the spring is collected in a holding tank.
2. Brine is removed from holding tank once settled and put into a lead salt pan.
3. Salt residue is removed from the pan after brine has been boiled off. The collected salt once dried is transported in baskets and sacks



*An illustration showing what a salt house may have looked like*



Roman military salt works in Middlewich. Top: Brine shaft, hand dug, and timber lined found just off King Street.

Above: Another shaft being uncovered at Jersey Way.



The holding tank at Jersey Way



Quern stone found at Jersey Way on top of the back filled brine shaft. Used to grind the salt lumps.